

2010
**Management of the
Environment of Care (MEC)**
Cabell Huntington Hospital

Linda Murray, Safety Manager ext. 2153



**This program includes seven sections,
one for each of the Management of the
Environment of Care (MEC) plans**

- Safety**
- Security**
- Hazardous Materials/Waste Management**
- Emergency Management**
- Life Safety**
- Biomedical Equipment**
- Utilities Management**

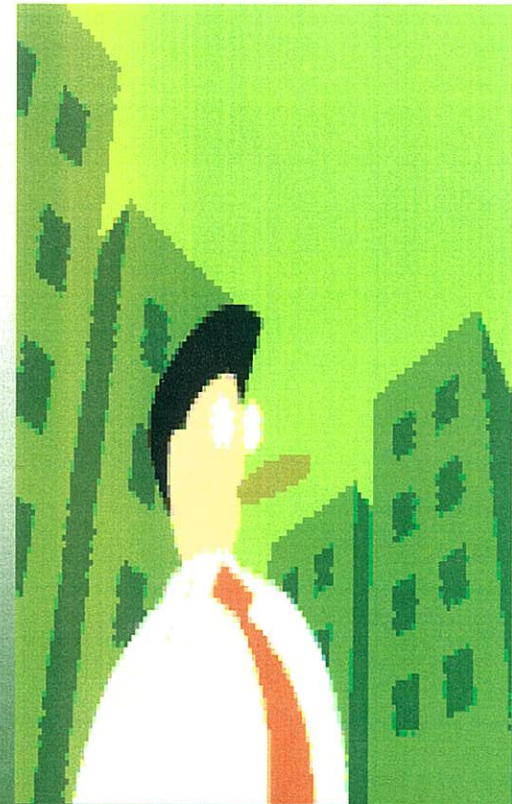
Smoking

- Smoking is not permitted in the hospital, hospital facilities or hospital grounds
- **Exception:** Designated smoking areas outside the facility



Our Responsibility

- ALL employees are expected to assist in the enforcement of the Smoking Policy
- Use compassion, tact, diplomacy and appropriate judgment when assisting with the compliance of this policy



Liquid Nitrogen safety

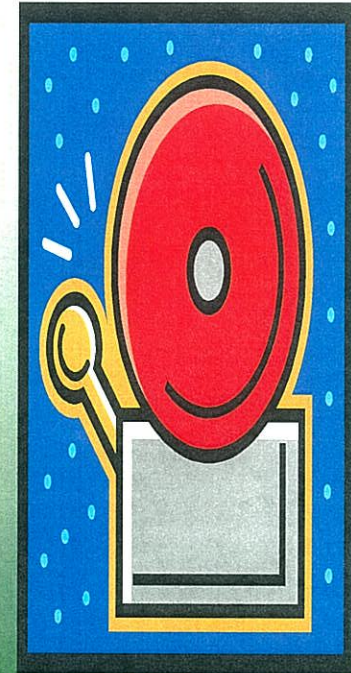


- It is non toxic but may cause suffocation by displacing the oxygen in the air
- Exposure may cause drowsiness, dizziness, nausea, vomiting, excess salivation, diminished mental alertness, loss of consciousness, and death

Liquid Nitrogen Release

- A tank of liquid nitrogen is located in the IVF lab on the third floor in the west corridor opposite the megavator.
- An oxygen sensor has been installed in the liquid nitrogen storage room .
- In case of a release that decreases the oxygen level below 19.5%, an alarm will sound and a light in the corridor above the door to the storage room will flash.

(At no time are two-way radios to be keyed in this area, since they set off the oxygen sensor)



Liquid Nitrogen Release cont.



- Staff on the 3rd floor have received training on special procedures for evacuation
- **Security officers will respond to secure the area and keep persons from entering the area**
- The megavator and the two adjacent elevators in the corridor will cycle to the first floor and open to discharge persons
- **The Huntington Fire Department will respond to assist in the event**
- No person shall enter the area unless they are wearing a self-contained breathing apparatus